

Valu-Line Tray Carts

For efficient service of trays to patients, the Burlodge Valu-Line Meal Distribution Carts are designed to deliver. Practical design options and a range of sizes makes them flexible to meet your needs.

Construction & Operating Features

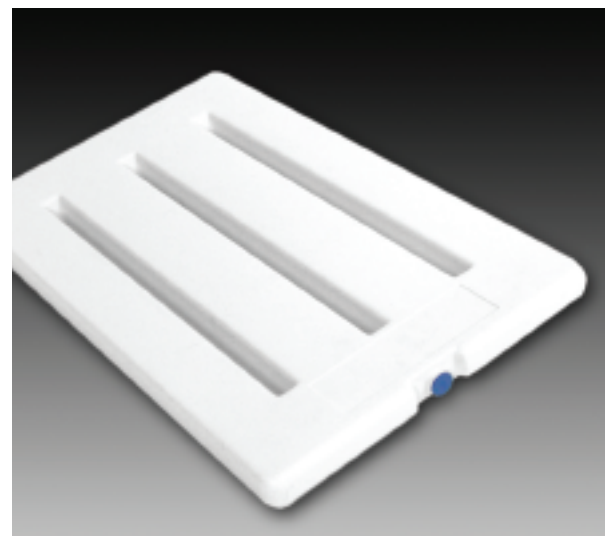
The double stainless steel walls with seamless, deep moulded tray supports spaced 4 1/2" apart will accommodate either 20 7/8 x 12 3/4 or 20 7/8 x 14 1/2 inch trays. Each set of tray supports has stability mouldings above to prevent trays from tipping during transit and service.

The seamless internal walls offer ease of cleaning for the food service staff either for hand washing or automated washing. The modular construction permits the replacement of individual panels should one be damaged. Each part can be removed and quickly replaced with minimum disruption.

Special hinges at the top and bottom permit the door to open a full 270° around the push handles. Fully opened doors are retained by a locking device which prevents unwanted closure during meal service. Option for the middle wall to accept cold packs for passive cooling of the cart.

The all round base bumper provides contact protection.

The combination of food grade stainless steel construction and the high quality workmanship guarantee a long working life for these meal delivery carts. See the chart for dimensions.



Cold packs for passive cooling



Ergonomics

The carts are mounted on 6 inch casters, two fixed and two swivel with brakes, for ease of mobility even when fully loaded. Alternative wheels can be supplied if required. Two vertical push handles run the height of the cart for convenient handling and excellent control, no matter what the height of the person pushing the cart.



Optional passive chilling by cold packs in middle wall.



Door hinge and hold open detail



Inside tray slide detail; G0550 tray shown



TTW.20.FL.EN
Valu-Line 20 Tray Cart

Reference Number	Tray Dimensions	External Dimensions			No. of Trays	Tray Layout	Weight
		Width	Depth	Height			
TTW.16.F.GN	12 3/4" x 20 7/8"	31 1/2"	36"	50 1/2"	2 x 8 = 16		195 lbs.
TTW.16.F.EN	14 1/2" x 20 7/8"	31 1/2"	36"	50 1/2"	2 x 8 = 16		195 lbs.
TTW.20.F.GN	12 3/4" x 20 7/8"	31 1/2"	36"	59 5/8"	2 x 10 = 20		220 lbs.
TTW.20.F.EN	14 1/2" x 20 7/8"	31 1/2"	36"	59 5/8"	2 x 10 = 20		220 lbs.
TTW.32.F.GN	12 3/4" x 20 7/8"	54 1/8"	36"	50 1/2"	2 x 16 = 32		320 lbs.
TTW.32.F.EN	14 1/2" x 20 7/8"	54 1/8"	36"	50 1/2"	2 x 16 = 32		320 lbs.
TTW.40.F.GN	12 3/4" x 20 7/8"	54 1/8"	36"	59 5/8"	2 x 20 = 40		360 lbs.
TTW.40.F.EN	14 1/2" x 20 7/8"	54 1/8"	36"	59 5/8"	2 x 20 = 40		360 lbs.
TTW.16.FL.GN	12 3/4" x 20 7/8"	38"	28 3/8"	50 1/2"	2 x 8 = 16		255 lbs.
TTW.16.FL.EN	14 1/2" x 20 7/8"	41 1/2"	30"	50 1/2"	2 x 8 = 16		255 lbs.
TTW.20.FL.GN	12 3/4" x 20 7/8"	38"	28 3/8"	59 5/8"	2 x 10 = 20		270 lbs.
TTW.20.FL.EN	14 1/2" x 20 7/8"	41 1/2"	30"	59 5/8"	2 x 10 = 20		270 lbs.
TTW.24.FL.GN	12 3/4" x 20 7/8"	54 3/4"	28 3/8"	50 1/2"	3 x 8 = 24		370 lbs.
TTW.24.FL.EN	14 1/2" x 20 7/8"	60"	30"	50 1/2"	3 x 8 = 24		370 lbs.
TTW.30.FL.GN	12 3/4" x 20 7/8"	54 3/4"	28 3/8"	59 5/8"	3 x 10 = 30		380 lbs.
TTW.30.FL.EN	14 1/2" x 20 7/8"	60"	30"	59 5/8"	3 x 10 = 30		380 lbs.